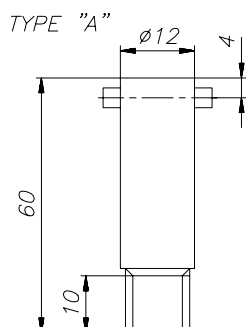


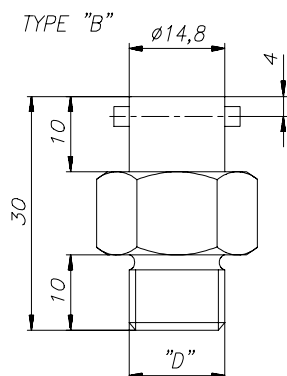
MOUNTING ADAPTERS

for spring loaded sensors



Specifications:

Type 'A'	:	slothead adapter for 6 mm; probe diameter; spring loaded sensors
Material	:	chrome plated steel
Bore	:	8,4 mm
Mounting thread 'D'	:	M 10 x 1; other threads optional
Surface clearance	:	40 mm
Mounting thread 'D'		Ordering code
M 10 x 1		MTS-94002



Specifications:

Type 'B'	:	hexhead adapter for 8 mm; probe diameter; spring loaded sensors
Material	:	chrome plated steel
Bore	:	9 mm
Hex size	:	17 mm
Mounting thread 'D'	:	M 12 x 1, M 14 x 1,5, R 3/8" or R 1/4" other threads optional
Surface clearance	:	10 mm
Mounting thread 'D'		Ordering code
M 12 x 1		MTS-94015
M 14 x 1,5		MTS-94017
R 3/8"		MTS-94018
R 1/4"		MTS-94019



Thermo Electric
P.O. Box 179
2740 AD Waddinxveen
The Netherlands

Tel. : +31 (0)182 – 302 850
Fax : +31 (0)182 – 302 777
E-mail : info@thermo-electric.nl
Internet : <http://www.thermo-electric.nl>

B/530
Rev.00 08/03