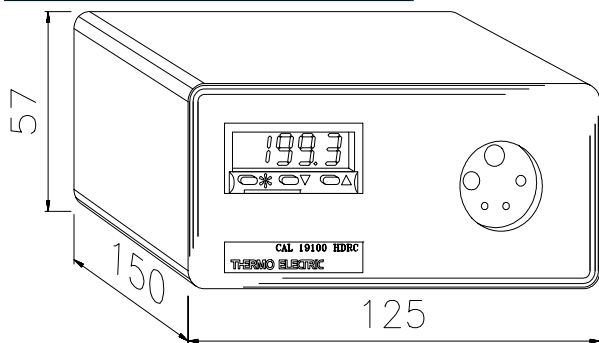


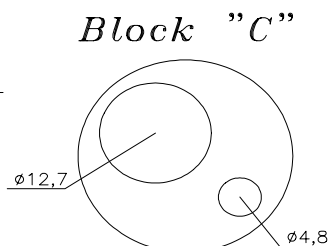
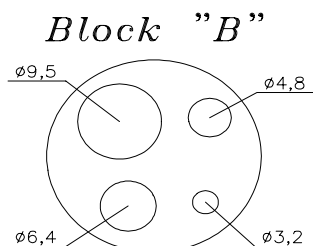
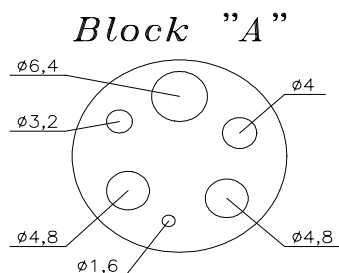
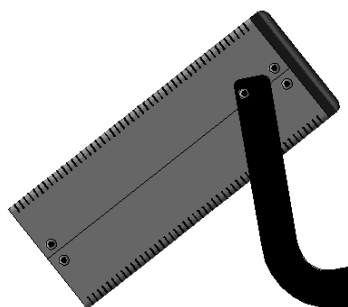
# HAND HELD DRY WELL CALIBRATOR

portable, 33 °C to 300 °C

## Dimensions (in mm):



Side view:



## Options:

The CAL-9100 fits neatly into the large case together with the Fluke 724 , the accurate temperature indicator/calibrator. In this way you have an accurate measurement unit together with an accurate temperature dry-well calibrator all in one light package. See datasheet K/151 for more information about the Fluke 724 .

## Accessories:

CAL-3206 : rugged carrying case for CAL-9100



Thermo Electric  
P.O. Box 179  
2740 AD Waddinxveen  
The Netherlands

Tel. : +31 (0)182 – 302 850  
Fax : +31 (0)182 – 302 777  
E-mail : [info@thermo-electric.nl](mailto:info@thermo-electric.nl)  
Internet : <http://www.thermo-electric.nl>

J/505r