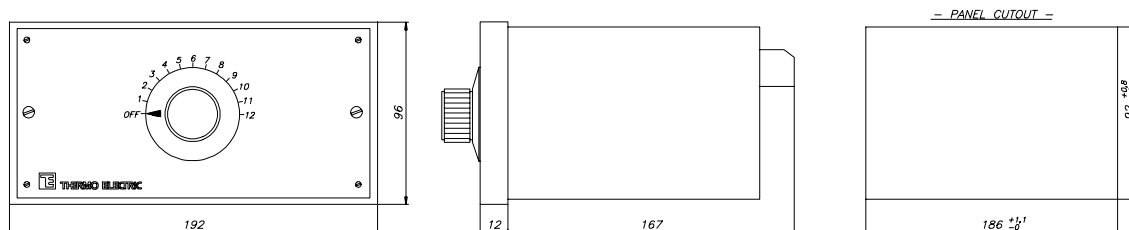


ROTARY SWITCH

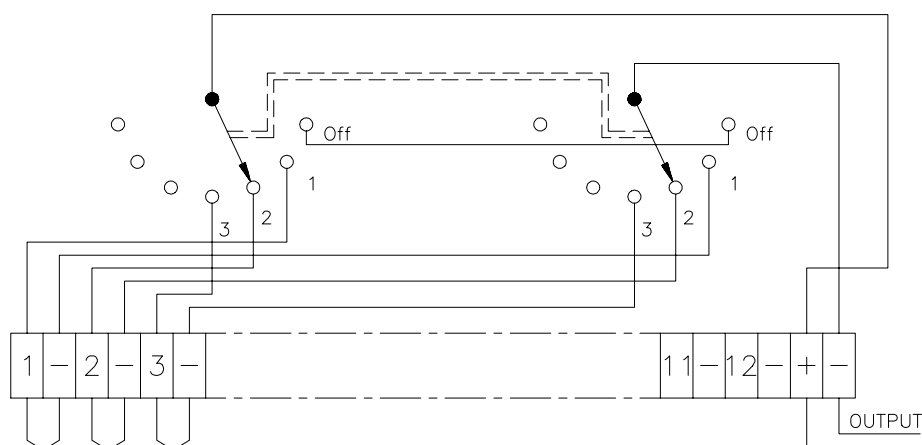
for t/c, RTD or other low voltage primary sensors



Dimensions (in mm):



Options:



We recommend internal wiring of thermocouple material when temperature gradients are expected between terminals and switch contacts.

All models available for 3 and 4 wire resistance thermometer except SWT-10023 4 wire. When required 3 or 4 wire RTD, specify P3 or P4 after model number.

Standard and custom built key switches and push buttons switches also available.

Break before make also available upon special request.

An earth terminal per sensor is available as option upon request.



Thermo Electric
P.O. Box 179
2740 AD Waddinxveen
The Netherlands

Tel. : +31 (0)182 – 302 850
Fax : +31 (0)182 – 302 777
E-mail : info@thermo-electric.nl
Internet : <http://www.thermo-electric.nl>

J/310r
Rev.00 08/03